

2022 ANNUAL REPORT

COMMUNITY ACCESS UNLIMITED



**PROGRESS AND
PERSISTENCE**

CONTENTS

- 2 Our Mission
- 3 Message From Leadership
- 4 2022: A Timeline
- 5 Our Work
- 8 Our Impact
- 9 Through Their Eyes: Member Spotlights
- 12 Teamwork Makes it Possible: Thank You to our Staff
- 13 By the Numbers
- 14 Our Funders
- 16 Board of Trustees
- 17 Leadership Team
- 18 Support Us



OUR MISSION

OUR MISSION

.....

To provide community access through effective and comprehensive services to people with developmental disabilities, youth aging out of foster care and people with affordable housing needs, giving them the opportunity to live independently and to lead fulfilling lives as citizens integrated into the community.

OUR VISION

.....

We strive for our members to achieve:

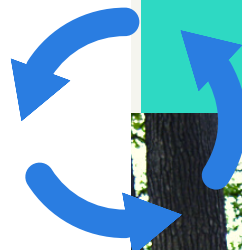
- Economic self-sufficiency while being as productive as commensurate with their abilities
- Independent living within the community according to their abilities, resources and needs
- A functional level of money management
- A satisfying social life
- A healthy lifestyle
- Personal growth
- Equal rights and self-determination

OUR VALUES & BELIEFS

.....

We believe all of our members have a right to:

- Community integration
- Holistic interactions as valued human beings
- Equal treatment as citizens
- Equal value as members of a social action movement
- Choice and self-determination
- Real lives in real homes



MESSAGE FROM LEADERSHIP

Welcome to Community Access Unlimited's annual report for 2022! We hope you will learn more in these pages about the essential and comprehensive services CAU provides to people with developmental disabilities and youth at risk in Union County and across New Jersey.

We are also excited to share with you the experiences and stories of some of our wonderful members. Our theme for this year's annual report is progress & persistence. From members achieving new goals to our team growing and forging new connections in the community, we are motivated for the future by the drive of our staff and members.

We invite you to reach out to us to learn more about the many services CAU provides that are outlined in this report. With more than 43 years serving New Jersey, we are proud to assist members with housing, life skills, employment, personal finance, relationships, civic engagement, and much more.

This year we were proud to introduce new services and renew partnerships that allow us to serve more people in our community. We launched speech therapy services to provide one-on-one assistance with speech and language skills to individuals around New Jersey. Our summer paid internship program for students with disabilities returned after a pandemic hiatus and introduced 100 students to diverse work experiences in Union and Essex counties.

The New American Movement for People with Disabilities, an advocacy organization formed at CAU in 2013, has relaunched with a focus on attracting new members to their mission of promoting equality regardless of disability status.

CAU was also instrumental this year in administering assistance for Union County residents affected by COVID-19: we provided 800 individuals and families with grocery gift cards and utility assistance funded by the federal CARES Act.

We remain committed to helping families and caregivers navigate the world of services for individuals with disabilities. Our dedicated team is here to answer your questions and help you on your journey with the many advantages that becoming a CAU member has to offer.



MARC LEVY
BOARD PRESIDENT



BERNADETTE GRISWOLD
EXECUTIVE DIRECTOR

2022: A TIMELINE



JANUARY

NEW VEHICLE FLEET AND
DISASTER PREPAREDNESS KITS
ACQUIRED FOR RESIDENTIAL
PROGRAMS

FEBRUARY

NEW CONSTRUCTION RESIDENTIAL
PROGRAM IN ROSELLE **OPENED**



APRIL

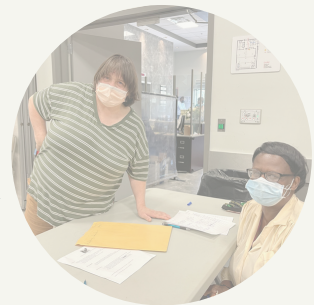
YOUTH LEADERSHIP
PROGRAM **EXPANDS**
IN-PERSON TRAINING

MARCH

INCREASE IN NURSE VISITS AT
RESIDENTIAL PROGRAMS TO
IMPROVE PREVENTATIVE HEALTH
MEASURES FOR MEMBERS

MAY

NEW AMERICAN MOVEMENT FOR
PEOPLE WITH DISABILITIES (NAM)
RELAUNCHES WITH VOTER
EDUCATION



JUNE

CAU COMMUNITY
PLAYERS **PRESENT** THE
WIZARD OF OZ



JULY

ACE VISUAL ART CLASS GIVES
STUDENTS THE **OPPORTUNITY**
TO STUDY AND MAKE ART
INSPIRED BY A DIVERSE ARRAY
OF FAMOUS ARTISTS



AUGUST

OVER 100 YOUTH **PARTICIPATE** IN
SUPPORTED INTERNSHIP
PROGRAM IN UNION AND ESSEX
COUNTIES

SEPTEMBER

ANNUAL IRA GELLER
WALKATHON FUNDRAISER

OCTOBER

EMERGENCY HOUSING AND
SUPPORT **PROVIDED** TO 15 ADULTS IN
CRISIS IN 2022 IN EMERGENCY
CAPACITY SYSTEM (ECS)



NOVEMBER

PACES PROGRAM **SUPPORTS** 110
YOUTH MEMBERS IN 2022 WITH
85 MEMBERS ENROLLED IN
POSTSECONDARY EDUCATION
OR EMPLOYED

DECEMBER

CAU TRANSITION FAIR **HELPS**
FAMILIES PLAN FOR THE FUTURE



OUR WORK



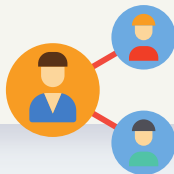
HOUSING

- 55 residential programs with 24-hour support staff
- 256 housing units across Union County
- Safe housing, food, clothing medical care, educational assistance, life skills, training & emergency housing for youth & adults



EMPLOYMENT SERVICES

- Prevocational training
- Career planning
- Supported employment (job coaching)
- Paid work experiences
- Support to employers to build workplaces inclusive of people with disabilities



SUPPORT COORDINATION

- DDD-approved to coordinate and monitor support services plans
- Work with members and families to reach goals and find the best services available in their communities
- 24-hour hotline for members and families

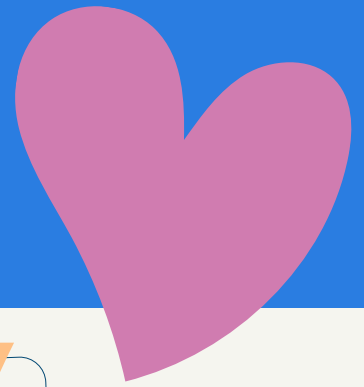


DAY PROGRAM

- Spacious day program in Cranford, NJ
- Enriching daily activities
- Focus on independent living skills
- Access to medical and behavioral supports, individual counseling, and sensory lounges



OUR WORK



ACE

"Academy for Continuing Education"

- Variety of educational groups
- Flexible schedule
- Subjects include: math, reading, music, self-help and more
- Socialization with peers



COMMUNITY-BASED SUPPORT

- Services at home and in the community
- Assistance with attending an event or class, shopping and building daily living skills



ADVOCACY

- New American Movement for People with Disabilities
- Helping Hands self-advocacy group
- Youth advocacy
- Member-directed groups mobilize around issues that matter to them

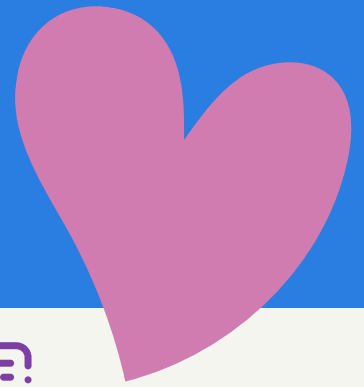


BEHAVIORAL MANAGEMENT

- BCBA-licensed behaviorists and licensed social workers
- Behavioral support plans built around needs and goals
- Assistance with daily living skills, socialization, coping skills



OUR WORK



ASSISTIVE TECHNOLOGY

- Assistance to acquire AT tools
- Alternative and augmentative communication devices, smart home technology, voice controls
- Environmental/home modification assessments for people with disabilities



SPEECH THERAPY

- Licensed speech language pathologist (SLP) travels to meet for one-to-one support
- Assistance with speech, language and cognitive communication skills



YOUTH SERVICES

- Transitional Opportunities Program (TOP)
- Pathways to Academic and Career Exploration to Success (PACES)
- Transitional housing
- Youth shelter
- Independent living skills training
- Support to finish school and find work



OTHER CAU SERVICES

- Respite
- Financial Management
- Family Support Group



OUR IMPACT

43

Years creating a more accessible New Jersey

1,900

Members served in CAU programs for individuals with disabilities

276

Members living in the community at supported housing programs

426

Members direct their own services in the Personal Assistance Service Program

200+

Youth services members supported in transition to stable adulthood

682

Support Coordination members connected to services around New Jersey

200

Members have received assistive technology tools through CAU support

180

Adult and youth members supported in their career goals by employment services

98

Day Program and Academy of Continuing Education members

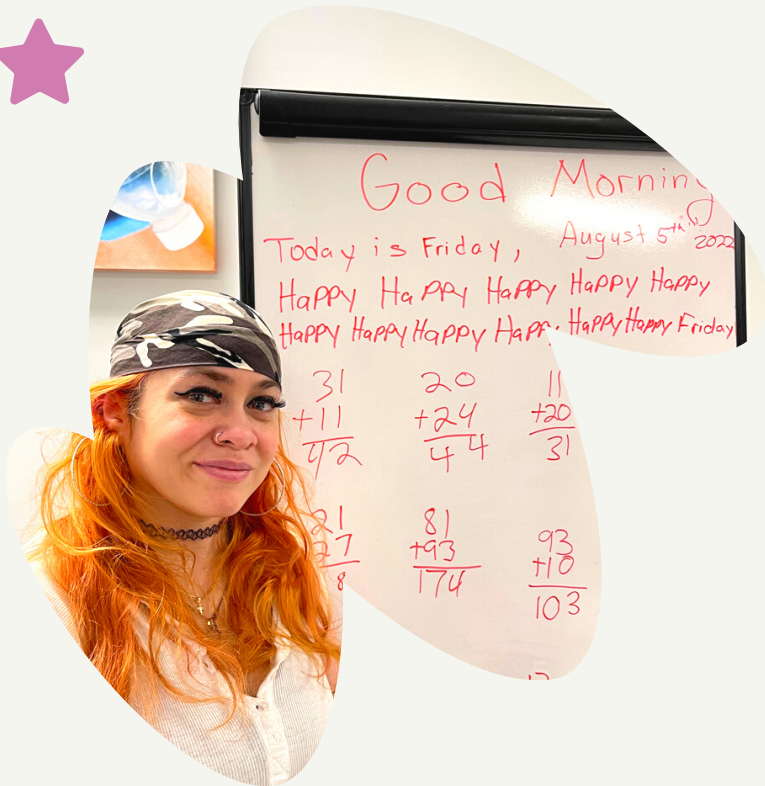
255

Members have help managing their finances with representative payee services

COMMUNITY ACCESS U N L I M I T E D



THROUGH THEIR EYES: MEMBER SPOTLIGHTS



CAU Day Program is a lively place when everyone gets involved in Berta's lessons. Berta attends the day program and is passionate about teaching and growing her skills. Every week she assists with math group and a Spanish lesson to help members learn new words and phrases.

Berta said she is happy to have made new friends at CAU and to be feeling strong and healthy after a recent illness. At her residential program she likes to do art projects and cook.

"I was a new student and I was a little shy but I'm great now," Berta said. "I'm a good teacher- I'm a Spanish teacher and I taught a lot of classes in my old school...I like to come to the program because I have my friend Miss Gloria. I want to be a teacher like her."

Lavar is known for his great taste in music and has been a residential program member for 10 years. He enjoys listening to Janet Jackson and Brian McKnight, watching action movies, and going to the park with his staff. Lavar recently started attending a new day program with one of his roommates and he's happy he made the change:

"They have computers for me to go on the internet and we go outside," he said. "We do arts and crafts and exercise and they have good lunches."

Lavar said he enjoys a tradition of going to Red Lobster on his birthday every year. Next up he is working on planning his first trip to Disney World with his staff, Tamara.



THROUGH THEIR EYES: MEMBER SPOTLIGHTS



Rachel is proud to be taking on more responsibilities with supported employment and prevocational training at Vaseful, where she helps prepare floral arrangements and assists customers in the flower shop. Her CAU support coordinator, Hailey, has helped Rachel and her mother, Susan, to learn about and register for services and activities in her area.

Thanks to Hailey, Rachel also found a love for weekly yoga classes, which she had never tried before. "Hailey has been great," Susan said. "She has been very helpful in showing interest in Rachel's goals and dreams and helping her try and connect with programs, both job related and recreational, that match her interests."

Rachel has also been working on her math skills to use a cash register. She said she is happy to be earning an income and has a goal of finding an office-based job in the future. "I feel proud and independent because I have my own money and I'm working for it, not having to rely on my parents," Rachel said.

Teamwork and motivation were key to supporting Brian's behavioral needs and helping him feel comfortable at home and out in the community. He has been working with his behaviorist, Carlamaria, for four years now and is enjoying learning new things with her and going to day program three days a week.

Brian moved to CAU housing after his parents passed away, and was very withdrawn at first. "Being moved took a lot of getting used to. He just wanted to stay in his room lights off," said his guardian and aunt, Susan. "Now he's like 100 times better. I really appreciate everything that CAU and Carla have done. It's a total change; he's like back to the person I knew growing up."

Carlamaria said Brian enjoys going for walks in the park, bowling, and going out to get French fries or dinner. At home he is learning to make his own sandwiches. "I'm so proud of him, Brian has come such a long way," Carlamaria said.



THROUGH THEIR EYES: MEMBER SPOTLIGHTS



Melissa keeps a busy schedule and is always looking for ways to grow her independence and knowledge. She enjoys her studies at the Academy of Continuing Education in math and reading, music, theater, and history, and likes getting to know new people through CAU.

"I think it's a great experience- I've made a lot of friends and it's good for socialization," Pearl said of ACE.

Pearl is also a member of the CAU Community Players and performed in *The Wizard of Oz* in June, where she experimented using a green screen for a scene in the virtual production. "I just enjoy acting and the socialization with my friends," she said about doing the show.

Next on Pearl's list is looking at independent housing options and finding an administrative job in the community.

Marie isn't letting anything stop her from finding success, and she enjoys trying new things along the way. With housing and support from CAU youth services, Marie was able to focus on earning her real estate license and getting a chef apprentice job in 2022. She is saving money to move into her own apartment and learning the business of real estate with the goal of selling her first house.

"I love learning new things, so it's a journey I'm willing to go down," she said. Marie also received the "Most Likely Achieve" award in youth services for her initiative in taking care of her responsibilities and pursuing new opportunities.

"If you ever need assistance you can ask, that's always been a good thing and they will try their best to help you," Marie said of the youth services team.



TEAMWORK MAKES IT POSSIBLE: THANK YOU TO OUR STAFF

Our talented staff create opportunities every day for CAU members to live, work and enjoy themselves as members of their community and reach new achievements. Thank you to everyone on our team who dedicates themselves to providing caring services and understanding the needs of our members. We appreciate everything you do!

CAU employees perform a variety of roles to benefit our members and community: from the day program staff who plan and run educational groups, to the representative payee staff who ensure members' bills are paid, the front desk reception staff who assist everyone who comes in the door looking for services, and everyone at departments in between, your combined contributions make CAU a place where people can find the comprehensive, impactful help they're looking for.

We value our Direct Support Professionals and youth support counselors and staff for the central role they serve as part of members' lives. You help them advocate for their needs to live their lives in the community to the fullest. DSPs also encourage integration to help others connect with individuals with disabilities, promoting acceptance and challenging prejudices. As the people who spend the most time with members, your input is essential to make our programs better. **Thank you for bringing your unique skills, positive attitudes and commitment to work every day!**

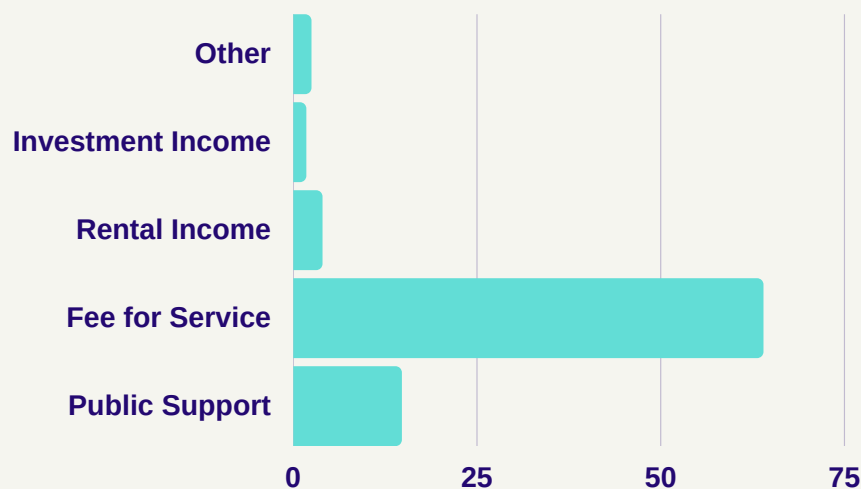


BY THE NUMBERS

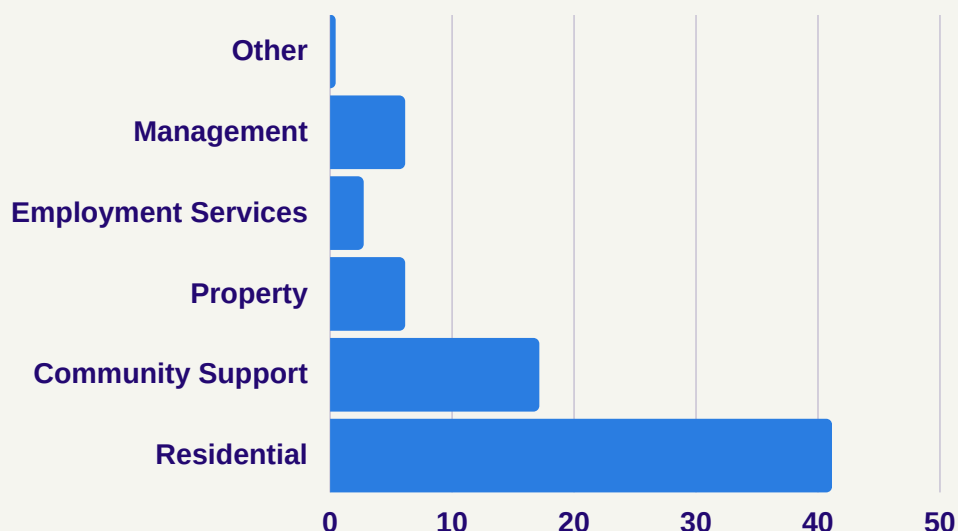
FINANCIAL GROWTH 1979-2021

	1979	1989	1999	2009	2019	2020	2021
Total Revenue	0.09	4.4	10.4	25.9	74.6	82.8	86.6
Total Assets	0	2.4	13.6	34.9	106.5	121.2	131.5
Equity	0	0.9	9.7	19.7	79.2	91.7	104.8

2021 REVENUE (AMOUNT IN MILLIONS)



2021 EXPENSES (AMOUNT IN MILLIONS)



OUR FUNDERS

Platinum Plus \$10,000+

BCB Community Bank	K.A Richuso	The Hyde Watson Foundation
EJ Grassman Trust	Northfield Bank	Valley National Bank
Elizabeth Health Care	Richuso, Kenneth & Virginia	W & J Fishwick
Innovative Benefit Planning		

Platinum \$5,000-\$9,999

Ann Earle Talcott	HBK CPAs & Consultants Hill,	Meeker Sharkey
Colonial Hardware	Barth & King LLC	Union County Savings Bank
Delivering Good	M&T Charitable Foundation	Union Foundation

Gold \$2,500-\$4,999

CORT Furniture	Merrill Lynch / The D'Alia	Investors Foundation
Elizabeth Pharmacy	Group	TD Bank
Griswold, Bernadette	Mutual of America	
Innovative Compensation &	Poltrock, Harold	
Benefits Concepts	Spencer Savings Bank	

Silver \$1,000-\$2,499

Alfred H Sauer	EKA Associates LLC	Paris, Michael
Arleo & Donohue, Esqs.	Epstein, Becker & Green, PC	Neuhauser, Maxine
Aspell, Kevin	Gein, MBA, Patrick	NJ State Legislature, District 21
B&B Press Inc.	Hehl Offices of Javerbaum	NJGA
Bio Shine	Wurgaft Hicks Kahn Wiks	Poltrock, Martin
Blackbaud Giving Fund	I Support the Girls	Rotary Club of Elizabeth
D'Alia, Bob	Watson, James	Taylor, Brian
Calabrese, Joseph	JW Attorneys	Donohue, Tim
Carbone, Michael	Kahn, Marcy	Woolson, Sheila
Cheskin, Charles	Lincoln Financial Advisors	World Insurance Associates, LLC
Economic Planning Group		

Bronze \$500-\$999

Bellewood Cleaning	Ferguson, Nancy	Knights of Columbus
Custom Construction	Freddy Perez	New Brunswick Lions Club
MDH Inc.	Griffin Alexander, PC	Panetta, Nick
Eagel Sports Promotions Inc.	H&J Security Systems	Rotary Club of Elizabeth
Epple, Mike	Kaufman Boorgest & Ryan	Estabrooks, Michael

OUR FUNDERS

Contributors \$100-\$499

Acevedo, Debbie
Acosta, Patricia
Adamski, Alison
Adeboye, Joshua
Aeriel, Dawn
Ajayi, Abiola
All Heart and Soul
Alston, Alysha
AmazonSmile
Anyanwu, Francis
Anyanwu, Ijeoma
Aponte, Marisol
Armstrong, Anita
Arroyo, Aisha
Arroyo, Noemi
Aurigemma, Mildred
Aziz, Iman
Baigorrea, Liz
Balash, Chris
Banks, William
Battle, April
Bellony, Ashley
Bender, Julia
Bradley, Joshua
Brady, Victoria
Brown, Gwendyne
Bryant, Tanaya
Burch, Cynthia
Busch, Billy
Calhoun, Kizzy
Chamberlain, Doris M.
Charles, Natalie
Choi, Sunmi
Chrysostome, Claude
Ciambuschini, Karen
Cisson, Angel
Cook, Deshala
Cook, Shaquita
Curtis, Davvi
Cushmeyer, Montana
Daniel, Jayden
Dejong, Dan
DeVries, Jennifer
Donelly, Vercilia
Douglas, Joan

Durham, Marvin
Eastman, Holly
Edwards, Renee
Eiser, Alan
Ejikeme, Ifeoma
EKA Associates
Elizabeth, Sheriff
Ensle, R.D, Karen
Ero, Evelyn
Ervin, Linda
Estrada, Charles
Ezeanya, Chukwuma
Ferguson, Fuquana
Flagg, Steven
Frank, Stephen
Fundora, Zulay
Garnes, Khristmas
Gately, Linda
Gibson, Janet
Giovannoli, Joseph
Glover, Charlotte
Golub, Jerry
Goncalves, Albert
Goodrich, Alison
Gordon, Ashley
Grady, Lyndesia
Greczek, Jeffrey
Grier, Onekia
Hakim, Toufic
Hall, Adrienne
Handler, Keith
Hankerson, Laura
Hansen, Tina
Haywood, Dianne
Healy, Helen
Hicks, Shawanna
Hiram, Lucy
Jacewicz, Ann Marie
Jackson, Daryl
Jackson, Natisha
Jalloh, Assata
Johnson, Nefrateria
Joncas, Charles R.
Joseph, Jacquetta
Joseph, Marphene

Kaplunovskiy, Boris
Kapnag Heating &
Plumbing
Kates, Asherah
Koelln, Jennifer
Koroma, Mohamed
Kuprianov, Rose
LeBaron, Tracy
Lebron, Jeanette
Lewis, Flow
Lynch, Sandra
Marshall, Stacy
McCrady, Michelle
McDowell, Sheila
McGoogin, Shanay
Michel, Lheruny
Mitchell, Asia
Modero, Marguerite
Mojena, Ana
Monroe, Joy
Moore, Lillie
Moore, Sabriyah
Morris-Marano, Robin
Morton, Jeff
MRE Write up Inc
Murray, George
Nash-Harris, Tanasia
NJ Techline HVAC
Nunes, Adelaide
Nzegwu, Felix
Obrzut, Robert
Okonofua, Jackson
Okoto, Felicia
One Simple Wish
Ophilien, Marie
Paintsil, Jospheh
Paypal Giving Fund
Perry, Tyneria
Phoenix Specialties
Pofcher, Benjamin
Prince Auto Collision
Prudent, Esther
Rackley, Omar
Rivera, Jazmyn
Rivers, Khudia

Rix, Kimberly
Roberts, Asante
Rosenkrans, Dirk & Janice
Ross, Spencer
Ruth-Hinton, Ramona
Schaefer, Rosemary
Scheffler, Robin
Schiff, Jacqueline
Scott, Tyleisha
Shulman, Leslie
Sly, Felena
Soares, Maria
Stein, Deborah
Sutton, Absonia
Sutton, Christine
Tandoh, Nana
Taylor, Jordanna
Tevi-Benissan, Irene
Thana, Suhanya
Theodore, Danie
Thomas, Barry
Trinitas Regional Medical
Center
Turiano, Rose
Anne Vilchez, Jennifer
Wade, Tyechia
Warren, Alicia
Webb, Victor
Weinstein-Matis, Cheryl
White, Lashanda
White, Natasha
Wiener, Kathy
Williams, Alexa Rae
Williams, Alisha
Williams, Anne
Williams, Daryl
Williams, Karen
Williams, Kim
Williams, Taneisha
Wingard, Don
Wright, Robyn
Wright, Tuquan
Yhap, Jr., Randy
Zabala, Michelle
Zorrilla, Rolando

BOARD OF TRUSTEES



MARK LEVY
Board President



KAREN M. ENSLE, RD
Secretary/Treasurer
President Elect



TENDAI NDORO, PHD
Secretary/Treasurer Elect



KEVIN ASPELL
Board Member



BERNADETTE GRISWOLD
Executive Director



MAXINE NEUHAUSER, ESQ
Board Member



HAROLD POLTROCK, ESQ
Board Member

HONORARY BOARD MEMBERS

Adelaide Daskam, Advocate
Robert C. Griffin, Esq.
Martin Poltrock, MA
Myrta Rosa, Advocate
Nicholas Scalera, MS

LEADERSHIP TEAM

Executive Team

BERNADETTE GRISWOLD

Executive Director

MILLIE AURIGEMMA

Associate Executive Director of Finance

ONEKIA GRIER

Associate Executive Director of Day
Habilitation and Educational Services

ROBYN WRIGHT

Associate Executive Director of Human
Resources

ROLANDO ZORRILLA

Associate Executive Director of Residential
Services

AISHA ARROYO

MAED of Residential Services

JOSHUA BRADLEY

MAED of Facilities and Information
Technology

RACHEL WORTHINGTON

MAED of Residential Services

SANDRA LYNCH

MAED of Employment and Community
Support Program

SHEILA MCDOWELL

MAED of Intake and Emergency
Placement

NICOLE RIBEIRO

Director of Development

Assistant Executive Directors of Residential Services

AFFE ANN HUNTE

Assistant Executive Director

ALEXANDRIA SAVASTANO

Assistant Executive Director

ANNE WILLIAMS

Assistant Executive Director

CHARLES ESTRADA

Assistant Executive Director

DIEGO ROSSELL

Assistant Executive Director

JASON D'ONOFRIO

Assistant Executive Director

JAYDEN DANIEL

Assistant Executive Director

JOY MONROE

Assistant Executive Director

KHUDIA RIVERS

Assistant Executive Director

KIMBERLY RIX

Assistant Executive Director

MARIE GUILLAUME

Assistant Executive Director

MARIE-MARCELLE JULIEN

Assistant Executive Director

MAXINE DACOSTA

Assistant Executive Director

SHAQUITA COOK

Assistant Executive Director

Assistant Executive Directors of Other Services

DANIE THEODORE

Director of Nursing

GEORGE MURRAY

Manager of Self-Directed Services

JEANETTE LEBRON

AED of Communications and Outreach

LUIS SERRANO

Operations Manager

VANESSA YALAKIDIS

AED of Electronic Health Records Services

WILLIAM BUSCH

AED of Assistive Technology Services

SUPPORT US

CAU is able to support thousands of individuals and families thanks to our generous donors, volunteers, and the greater community.

When you support our agency, you contribute to the growth and success of our members.

Make a donation today at caunj.org, or by check made payable to:

Community Access Unlimited
80 W Grand Street
Elizabeth, NJ 07202

CAU hosts fundraising events throughout the year to support our mission. Will you become a sponsor of the organization to help us reach our fundraising goals?

Contact CAU to learn more at info@caunj.org or 908-354-3040



Become a monthly donor today



Follow CAU on Facebook



Follow CAU on LinkedIn



THANK YOU FOR YOUR SUPPORT

